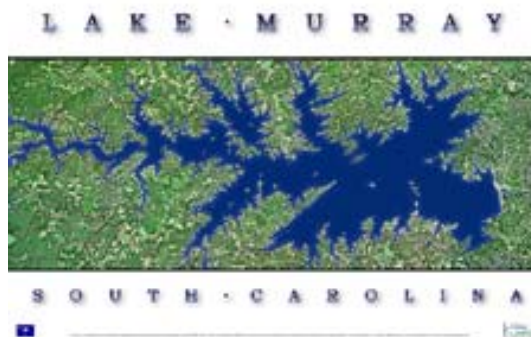


# LAKE MURRAY, SC

## THE SOUTH'S PREMIERE WATER PLAYGROUND



An "Issuu" e-Book Presentation by:

**MEL COKER**

**LAKE MURRAY & COLUMBIA REALTOR**

**[WWW.LAKEMURRAY-SC.COM](http://WWW.LAKEMURRAY-SC.COM)**

**[WWW.MELCOKER.COM](http://WWW.MELCOKER.COM)**

## LAKE MURRAY QUICK FACTS

**Location:** approximately 15 miles Northwest of Columbia, South Carolina. Bordered by counties of Richland, Lexington, Newberry and Saluda. Nearby cities and towns: Columbia, Irmo, Lexington, Chapin, Prosperity, Newberry

**Purpose:** Lake Murray was impounded in the late 1920s to provide hydroelectric power to the state of South Carolina. When the lake was finished, it was the world's largest man-made reservoir for power production purposes.

**Named for:** William S. Murray – an engineer from New York that realized that damming the Saluda River would create one of the world's greatest power developments (at that time).

**Owner:** South Carolina Electric and Gas Company

**Approximate size of lake:** 41 miles long; 48,000 acres; 649 miles of shoreline; maximum depth is app. 200 feet; surface elevation is 360 feet

**Typical lake levels:** Summer 358 feet; Winter 354 feet

**Dam information:** officially named Dreher Shoals Dam and often referred to as Lake Murray dam. Original dam completion in 1930 and is 1.6 miles long and 220 feet high. Backup dam completed in 2005.

**Current use:** hydroelectric power, boating, recreation, fishing, camping, FUN and municipal water source



## LAKE MURRAY FISHING

The fishing is great at Lake Murray! Tournaments are hosted frequently on the lake, including the Forest Wood Cup at Lake Murray in August 2008. Lake Murray is known as one of the most productive lakes in the Southeast for largemouth bass and striped bass.

What bites at the lake? Bass, Striped Bass, Crappie, Bream, Catfish and more.

### Mel's Recommended Lake Murray Fishing Guide:

Captain Buddy Bouknight

Sunrise Fishing Guide Service

Website: <http://www.sunrisefishing.net>

Fishing Report:

<http://www.dnr.sc.gov/news/freshwater.html#midlands>

Order Lake Murray Map & Poster online:

<http://kfmaps.com/default.aspx?Affiliate=10>





## LAKE MURRAY BOATING

With over 48,000 acres, Lake Murray has plenty of room for boaters. Most boaters do have good knowledge of safe boating practices and are very safe boaters. Please make sure you are knowledgeable of South Carolina boating laws and that you operate your boat in a safe manner.

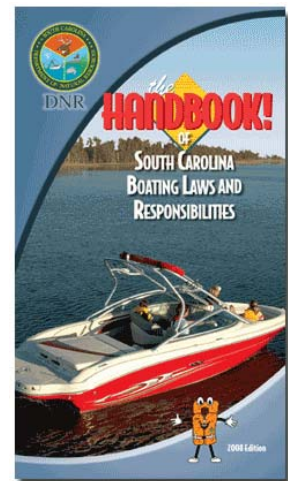


**Safe Boating Reminders:** Lookout for other boaters, skiers, swimmers and jet skiers \* Use caution at night and be sure to use boat running lights when required \* Be aware of overhead power lines that cross the water at certain locations \* Don't drink and drive \* Carry necessary safety equipment \* Carry life preserver for each person \* Observe depth & shoal markers (avoid shallow water) \* Check the weather forecast before you get on the water

[The Handbook of S.C. Boating Laws and Responsibilities](#)  
[S.C. Online Boating Safety Course and Exam](#)  
[Boating in S.C. – Department of Natural Resources](#)

[Lake Murray Power Squadron Boat Smart Course](#)  
[Lake Murray Power Squadron](#)  
[U.S. Coast Guard Auxiliary – Lake Murray](#)  
[Lake Wind Forecast](#)

**HELP!** [Sea Tow at Lake Murray](#) – Call (803) 606-7027



## LAKE MURRAY WATER FUN

**SWIM, SKI, TUBE, WAKEBOARD... IT'S ALL FUN ON LAKE MURRAY!**



### **Mean Monthly Lake Murray (top) Temperatures (Fahrenheit):**

January 51.9	May 72.5	September 79.1
February 49.8	June 80.0	October 72.3
March 53.6	July 84.3	November 64.7
April 62.6	August 84.0	December 57.7

# THE DEVIL WENT DOWN TO GEORGIA LAKE MURRAY

## ENCOUNTER WITH THE DEVIL AT RIVERSWEPT LANDING!



**"SHE'S THE DEVIL!"**  
*(HAVING FUN AT LAKE MURRAY)*

**NEED LAKE MURRAY REAL ESTATE ASSISTANCE?  
CONTACT MEL COKER. [CLICK NOW.](#)**

Columbia  
Chapin, Irmo, Lexington  
Lake Murray



[www.MelCoker.com](http://www.MelCoker.com)



## LAKE MURRAY EVENTS

The biggest event at Lake Murray each year is the Fourth of July Independence Day Celebration capped by a huge fireworks show at night. The show is spectacular with fireworks being set off at two locations on the lake. This is the most crowded day and night on the lake, so please exercise real caution.

[Click here for more information](#)

The “A Taste of Lake Murray” event held in March is the primary fund raiser for the 4<sup>th</sup> of July fireworks show.

[Click here for more information](#)

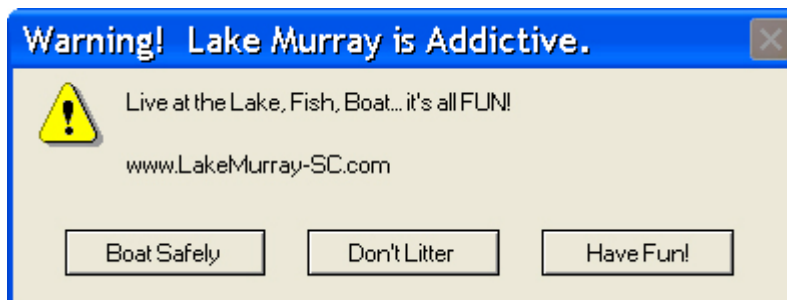


Many other events are held throughout the year around “Lake Murray Country.” For more information, visit the Capital City Lake Murray Country Visitor’s Center or website.

Visitor’s Center:

2184 North Lake Drive (S.C. Highway 6 near Dreher Shoals Dam); Columbia 29212

Website: [www.LakeMurrayCountry.com](http://www.LakeMurrayCountry.com)



## QUICK LAKE MURRAY HISTORY

The lower Saluda River valley was settled in the early 1750s by German, Dutch, and Swiss emigrants. By 1928, about 5,000 people were living in the Saluda River valley. The community included 3 churches, 6 schools, and 193 graveyards. As the demand for electricity in the developing Southern United States increased during the early 1900s, it became apparent that harnessing the flow of large rivers such as the Saluda would be needed.

Around 1916, a man named T.C. Williams was proposing the development of hydroelectric power on the Saluda River. The proposal for a hydroelectric project were taken to a New York engineer named William S. Murray around 1923. William S. Murray was an engineer with much experience in electric power systems and generation.

Murray and his partner, Henry Flood, Jr., poured over topographic maps of the region and worked on estimates. Murray realized that a dam across the Dreher Shoals area would be one of the greatest for any power development in the world and visited South Carolina to investigate.

The work of clearing the site for the project was started in April 1927. The Saluda Hydroelectric Project was constructed between 1927 and 1930 by the Lexington Water Power Company, which merged in 1943 with South Carolina Electric and Gas Company. Lake Murray came into existence in July 1930, when the reservoir reached an elevation of 298.5 feet. In 1931 Lake Murray reached an elevation of 348.5 feet, and in 1933 it reached 358.5 feet.

In 2002, construction was started on a new backup dam immediately downstream of the original dam, which had been determined to be subject to possible failure during a recurrence of the 1886 Charleston earthquake. The new backup dam consists of rock fill embankment sections on the north and south ends, with a roller-compacted concrete gravity section in the center. The original dam remains in place; and during construction, additional material was added to it to provide a base for two additional lanes of SC Highway 6. Construction of the backup dam was completed in 2005.

Both dam building projects were hailed as significant engineering feats.

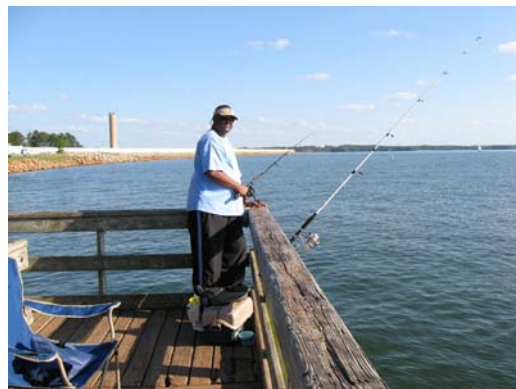




## WALK ACROSS THE DAM

The Columbia area's newest walking pathway is directly across the top of the Dreher Shoals Dam! The distance is 1.7 miles each way for a total walk of 3.4 miles. The walkway is wide and offers spectacular views of Lake Murray and even the downtown Columbia skyline 11 miles away. This pathway was completed after the construction of the new backup dam at Dreher Shoals Dam on Lake Murray and with the widening of S.C. Highway 6 across the top of the dam.

Website: [www.LakeMurray-SC.com/damwalk.html](http://www.LakeMurray-SC.com/damwalk.html)



## LAKE MURRAY REAL ESTATE

Want to live on or near Lake Murray? It's easy... contact Mel Coker, a life-long Columbia area resident to get started. Mel lives on Lake Murray in the Chapin area. Mel knows Lake Murray!

There are many options for Lake Murray living: buy a waterfront home, buy a waterfront lot and build or buy a home near Lake Murray. Many homes not on the lake offer Lake Murray access with a community ramp in the neighborhood or a public ramp nearby.



Recently, Mel completed a detailed Lake Murray sales analysis.

[CLICK HERE for that report:](#)

<http://lakemurraysc.blogspot.com/2009/02/lake-murray-home-sales-update.html>

Search Columbia MLS: [www.GreatColumbiaSChomes.com](http://www.GreatColumbiaSChomes.com)

*(or call Mel Coker for your personalized home listings sent by email)*

### MEL COKER

**RE/MAX METRO ASSOCIATES**  
690-B COLUMBIANA DRIVE; COLUMBIA, SC 29212  
**TELEPHONE: (803) 318-2007**  
**TOLL-FREE: (888) 528-2258**  
**EMAIL: [MELCOKER@REMAX.NET](mailto:MELCOKER@REMAX.NET)**  
**INTERNET: [WWW.MELCOKER.COM](http://WWW.MELCOKER.COM)**



[Click for: Mel Coker's Real Estate Website](#)

## LOVE LAKE MURRAY?

There is no better way to show your support for Lake Murray than to **JOIN NOW with the Lake Murray Association!** It's highly recommended by Mel Coker. Mel has been a long-time member.



[www.LakeMurrayAssociation.org](http://www.LakeMurrayAssociation.org)

It's easy and inexpensive to join. Join and participate... read the newsletter, attend the semi-annual meetings, attend events and participate in the work. The LMA through its active membership and board of directors works to maintain and preserve Lake Murray as one of the most beautiful recreational lakes in the South.

**The** Lake Murray Association (LMA) provides representation for all lake users from the four counties around the lake on issues that pertain to the development, management and use of Lake Murray. The Association works to foster cooperation among the various users and organizations with an interest in the lake to insure a clean, safe, and user friendly lake.

**The** LMA provides information on items and issues of interest to lake users through its quarterly newsletter (Lake~Link), regular meetings, lake oriented programs and participation in community events.

The Lake Murray Association IS the voice of Lake Murray. Please join NOW to protect this beautiful resource.

**Membership Application:**

<https://secure124.websitewelcome.com/~lmarn/application.htm>



## LAKE MURRAY PUBLIC PARKS AND RAMPS

**Dreher Island State Recreation Area** is located on Lake Murray between Chapin and Prosperity, SC. This beautiful 348-acre park with 12 miles of Lake Murray shoreline provides guests with a variety of outdoor water recreation opportunities. The park offers lakeside camping, picnicking, lakeside villas, store, boat ramp and a nature trail.

Location: 3677 State Park Road; Prosperity, SC 29127

Website: <http://www.southcarolinaparks.com/park-finder/state-park/1371.aspx>

Telephone: (803) 364-4152

Fees for: Park entrance, camping, villa reservations



### Recreation Areas & Ramps Provided by South Carolina Electric & Gas Company (SCE&G)

Two recreation areas are located at the Dreher Shoals Dam between Lexington and Irmo, SC on S.C. Highway 6. Each charges an entrance fee for security and traffic control purposes.

South Rec Area (Lexington side): Picnic tables, shelters, swimming (no lifeguard), public restrooms. Pets not allowed.

North Rec area (Irmo side): Picnic tables, shelters, public restrooms, boat ramp, fishing pier. Pets not allowed.

### Other free public boat ramps provided by SCE&G:

*North Side:* Hilton Rec Area: Wessinger Road at Putnam Drive; Rocky Point Rec Area: White Water Road off Amicks Ferry Road; Sunset Road Rec Area: Sunset Road off Holland's Landing Road

*South Side:* Larry Koon Boat Landing: Shull Island Road at Shull Island Bridge; Lake Murray Rec Area 3: Holly Ferry Road; River Bend Point Rec Area: River Bend Road

## MORE LAKE MURRAY INFORMATION

Mel Coker's Lake Murray website: [www.LakeMurray-SC.com](http://www.LakeMurray-SC.com)

Mel Coker's Lake Murray Blog: [www.LakeMurrayBlog.com](http://www.LakeMurrayBlog.com)

Fishing Reports:

<http://www.dnr.sc.gov/news/freshwater.html#midlands>

[http://www.scfishingreport.com/Pages/bodies\\_of\\_water/lakes/lake\\_murray/lake\\_murray.html](http://www.scfishingreport.com/Pages/bodies_of_water/lakes/lake_murray/lake_murray.html)

Lake Murray Association: [www.lakemurrayassociation.org](http://www.lakemurrayassociation.org)

Lake Murray Water Levels and Temperatures:

[http://waterdata.usgs.gov/sc/nwis/uv/?site\\_no=02168500&agency\\_cd=USGS](http://waterdata.usgs.gov/sc/nwis/uv/?site_no=02168500&agency_cd=USGS)

Lake Murray area weather: <http://www.lakemurray-sc.com/weather.html>

[http://www.ndbc.noaa.gov/station\\_page.php?station=lmfs1](http://www.ndbc.noaa.gov/station_page.php?station=lmfs1)

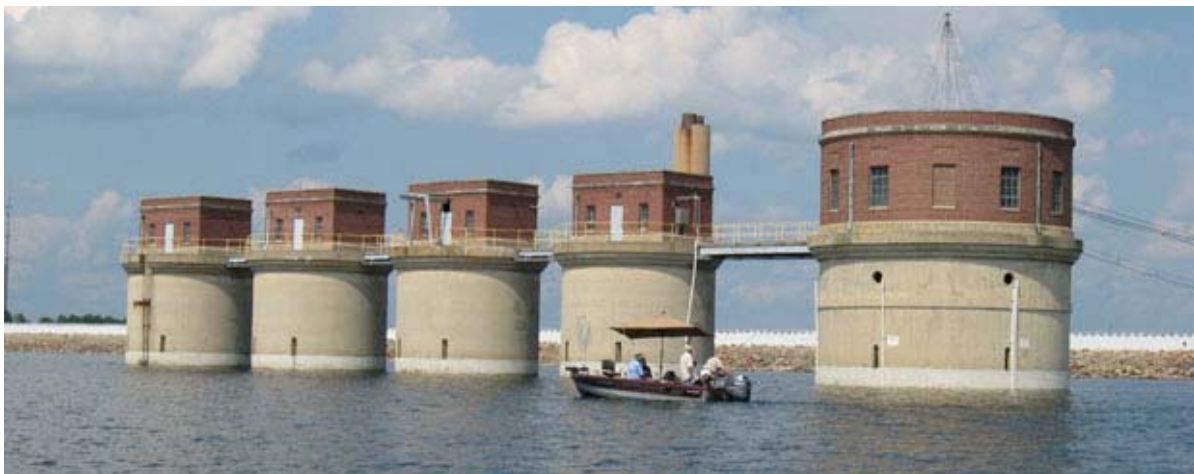
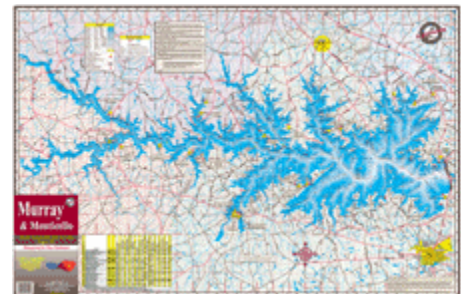
Lake Murray History: <http://www.sceg.com/en/my-community/lake-murray/history/>

Buy Lake Murray MAP or POSTER Online:

<http://kfmaps.com/default.aspx?Affiliate=10>

Columbia "A to Z": [www.ColumbiaSouthCarolina.com](http://www.ColumbiaSouthCarolina.com)

Columbia Blog: [www.ColumbiaBlog.info](http://www.ColumbiaBlog.info)



**The 5 Towers at Dreher Shoals Dam on Lake Murray**

[Lake Murray Website](http://www.LakeMurray-SC.com) | [Lake Murray Blog](http://www.LakeMurrayBlog.com)

**THANKS FOR VIEWING  
MEL COKER'S LAKE MURRAY "ISSUU" E-BOOK  
([PLEASE SHARE WITH SOMEONE](#))**



*Lake Murray's Dreher Shoals Dam from Irmo side*  
(from Wikipedia Commons License)

**Mel Coker's Websites:**

[www.MelCoker.com](http://www.MelCoker.com) | [www.MelCoker.info](http://www.MelCoker.info)  
[www.ColumbiaSouthCarolina.com](http://www.ColumbiaSouthCarolina.com) | [www.ColumbiaBlog.info](http://www.ColumbiaBlog.info)  
[www.ColumbiaSouthCarolina.com/homes](http://www.ColumbiaSouthCarolina.com/homes) | [www.GreatColumbiaSCHomes.com](http://www.GreatColumbiaSCHomes.com)  
[www.LakeMurray-SC.com](http://www.LakeMurray-SC.com) | [www.LakeMurrayBlog.com](http://www.LakeMurrayBlog.com)  
[www.issuu.com/mcoker](http://www.issuu.com/mcoker)

**Mel Coker**  
REALTOR®, CRS, ABR, GRI  
**803-318-2007**  
**www.MelCoker.com**

RE/MAX Metro Associates  
Each Office is Independently Owned and Operated  
690-B Columbiana Dr. Columbia, SC 29212  
Office 803-749-5800 • [MelCoker@remax.net](mailto:MelCoker@remax.net)